



Artist Series and Pro Tools® Guide

EuControl v2.6

Legal Notices

This guide is copyrighted ©2011 by Avid Technology, Inc., (hereafter "Avid"), with all rights reserved. Under copyright laws, this guide may not be duplicated in whole or in part without the written consent of Avid.

003, 96 I/O, 96i I/O, 192 Digital I/O, 192 I/O, 888|24 I/O, 882|20 I/O, 1622 I/O, 24-Bit ADAT Bridge I/O, AudioSuite, Avid, Avid DNA, Avid Mojo, Avid Unity, Avid Unity ISIS, Avid Xpress, AVoption, Axiom, Beat Detective, Bomb Factory, Bruno, C|24, Command|8, Control|24, D-Command, D-Control, D-Fi, D-fx, D-Show, D-Verb, DAE, Digi 002, DigiBase, DigiDelivery, Digidesign, Digidesign Audio Engine, Digidesign Intelligent Noise Reduction, Digidesign TDM Bus, DigiDrive, DigiRack, DigiTest, DigiTranslator, DINR, DV Toolkit, EditPack, Eleven, EUCON, HD Core, HD Process, Hybrid, Impact, Interplay, LoFi, M-Audio, MachineControl, Maxim, Mbox, MediaComposer, MIDI I/O, MIX, MultiShell, Nitris, OMF, OMF Interchange, PRE, ProControl, Pro Tools M-Powered, Pro Tools, Pro Tools|HD, Pro Tools LE, QuickPunch, Recti-Fi, Reel Tape, Reso, Reverb One, ReVibe, RTAS, Sibelius, Smack!, SoundReplacer, Sound Designer II, Strike, Structure, SYNC HD, SYNC I/O, Synchronic, TL Aggro, TL AutoPan, TL Drum Rehab, TL Everyphase, TL Fauxlder, TL In Tune, TL MasterMeter, TL Metro, TL Space, TL Utilities, Transfuser, Trillium Lane Labs, Vari-Fi, Velvet, X-Form, and XMON are trademarks or registered trademarks of Avid Technology, Inc. Xpand! is Registered in the U.S. Patent and Trademark Office. All other trademarks are the property of their respective owners.

Bonjour, the Bonjour logo, and the Bonjour symbol are trademarks of Apple Computer, Inc.



Product features, specifications, system requirements, and availability are subject to change without notice.

Guide Part Number 9329-65088-00 REV A 5/11

Documentation Feedback

At Avid, we are always looking for ways to improve our documentation. If you have comments, corrections, or suggestions regarding our documentation, email us at **techpubs@avid.com**.

contents

Chapter 1. Introduction	1
System Requirements and Compatibility	1
About This Guide	2
About www.avid.com	4
Chapter 2. Software Configuration	5
Enabling EUCON in Pro Tools	5
Chapter 3. Track and Session Basics	9
EuControl Basics	10
Using the Transport	14
Banking Faders	16
Fader Strip Controls	17
Track Basics	19
Chapter 4. Recording	27
Select and Record Enable Tracks	27
Loop Record, Quick Punch, and Other Record Modes	28
Additional Recording Features	28
Chapter 5. Editing	29
Selecting Edit Tools and Edit Modes	29
Using the Jog/Shuttle Wheel	30
Using Markers	31
Soft Keys for Editing	32
Track View for Editing	32
Chapter 6. Plug-ins and Sends	33
Working with Plug-in Inserts	33
Working with Sends	38

Chapter 7. Automation and Mixing 43

- Enabling and Suspending Automation 43
- Track Automation Mode Selection 43
- Shortcuts to Display Automation Playlists 44
- Multichannel Panning for Surround 47

Index 49

chapter 1

Introduction

Avid's EUCON™ (Extended User Control) adapter enables fully integrated control of Pro Tools® from EUCON-compatible control surfaces.

This guide explains how to enable Artist Series controllers and use them with Pro Tools 9.0 or higher on supported Mac and Windows systems.



For setup and configuration instructions for EUCON on Pro Series systems (such as MC Pro and System 5) see the instructions that came with your hardware. For the latest software updates and information about these Avid control surfaces, visit www.avid.com/proseriesupport.

System Requirements and Compatibility

The features described in this guide require the following:

- Artist Series control surface
- Pro Tools or Pro Tools HD version 9.0 or higher
- EuControl software version 2.5.6 or higher (Mac), or version 2.5.7 or higher (Windows)

For downloads and other Artist Series resources, visit:

www.avid.com/artistsupport

Avid can only assure compatibility and provide support for hardware and software it has tested and approved. For complete system requirements and a list of qualified computers, operating systems, hard drives, and third-party devices for Pro Tools, visit:

www.avid.com/compatibility

About This Guide

This guide explains how to enable EUCON and use Artist Series control surfaces with Pro Tools.

If you are installing an Artist Series controller for the first time, start with the following resources:

- For EuControl software and hardware installation, see the printed documentation that came with your controller.
- For complete information on your unit, see the electronic PDF version of its *User Guide*.
- For EuControl software setup and configuration information, see the *EUCON Application Setup.pdf*.

For instructions on connecting and configuring Pro Tools, see the software installation and hardware user guides that came with your Avid system. For information about using Pro Tools software, see the *Pro Tools Reference Guide* (in Pro Tools, choose Help > Pro Tools Reference Guide).

Conventions Used in This Guide

All of our guides use the following conventions to indicate menu choices and key commands:

Convention	Action
File > Save	Choose Save from the File menu
Control+N	Hold down the Control key and press the N key
Control-click	Hold down the Control key and click the mouse button
Right-click	Click with the right mouse button

The names of Commands, Options, and Settings that appear on-screen are in a different font.

The following symbols are used to highlight important information:



User Tips are helpful hints for getting the most from your system.



Important Notices include information that could affect your data or the performance of your system.



Shortcuts show you useful keyboard or mouse shortcuts.



Cross References point to related sections in this and other Avid guides.

Hardware Keys on Artist Series Units

The names of keys on Artist Series hardware are in bold (such as **SEL**). The **SHIFT** key on Artist Series hardware is indicated by bold text, in all-caps (**SHIFT**).

SHIFT and SHIFT Lock

The **SHIFT** key on Artist Series units is used in conjunction with other keys to access secondary functions that are labeled in blue above the primary function. Two **SHIFT** keys are located at the bottom-left and -right on both Artist Control and Artist Mix. Artist Transport provides a single **SHIFT** key at the bottom-right.

The following simplified terminology is used to describe **SHIFT** functions.

Example:

- “Press and hold the SHIFT key then press the AUX key”

is written as

- “Press **SHIFT+AUX/GROUP**”

How to Use this PDF Guide

The Acrobat PDF version of this manual can be a valuable online resource. These are some useful features of the PDF:

- The Bookmarks on the left serve as a continuously visible table of contents. Click on a subject heading to jump to that page. Click a + symbol to expand that heading to show subheadings. Click the – symbol to collapse a subheading.
- The Table of Contents provides active links to their pages. Select the hand cursor, allow it to hover over the heading until it turns into a finger. Then click to locate to that subject and page.
- All cross references are active links. Allow the hand cursor to hover over the reference until it turns into a finger and click to follow the reference.
- Select Find from the Edit menu to search for a subject.

About www.avid.com

The Avid website (www.avid.com) is your best online source for information to help you get the most out of your system.

The following are just a few of the services and features available.

Product Registration

Register your purchase online.

Support and Downloads

Contact Avid Customer Success (technical support); download software updates and the latest online manuals; browse the Compatibility documents for system requirements; search the online Knowledge Base or join the worldwide Pro Tools community on the User Conference.

Training and Education

Study on your own using courses available online or find out how you can learn in a classroom setting at a certified Pro Tools training center.

Products and Developers

Learn about Avid products; download demo software or learn about our Development Partners and their plug-ins, applications, and hardware.

News and Events

Get the latest news from Avid or sign up for a demo.

chapter 2

Software Configuration

Before you proceed, make sure you have completed the following:

- Installed Pro Tools or Pro Tools HD version 9.0 or higher
- Installed the latest EuControl software and attached your Artist Series hardware

Enabling EUCON in Pro Tools

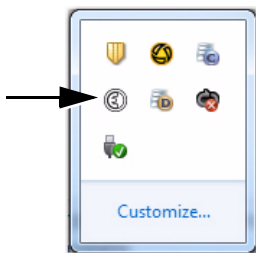
To enable EUCON control in Pro Tools:

- 1 Make sure EuControl software is running.
 - On Mac, your desktop should have a lit EuControl icon in the upper right corner.



EuControl icon

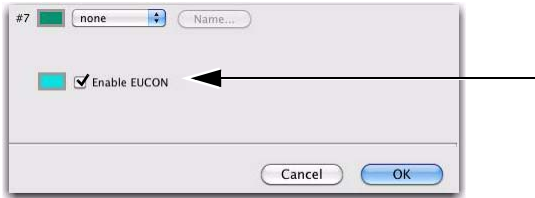
- On Windows, the icon appears in the System tray (or alongside other Hidden Icons if your system is not configured to automatically show icons in the System tray).



EuControl icon in tool bar Hidden Icons (Windows)


If this icon is not lit, make sure your controllers are powered on and attached. If the icon remains unlit, see the installation instructions that came with your Artist Series hardware.

- 2 Launch Pro Tools.
- 3 Choose Setup > Peripherals, and click the Ethernet Controllers tab.
- 4 Select Enable EUCON.



Enabling EUCON in the Peripherals dialog

- 5 Click OK. You do not need to configure any other Ethernet Controllers settings. These settings do not apply to EUCON.


 *Using Artist Series controllers with Pro Tools version 8.x and lower utilized the HUI (MIDI Controller) protocol. This is no longer necessary with Pro Tools 9.0 and higher.*

Pro Tools scans your system until it identifies attached EUCON-compatible hardware. When Pro Tools finishes scanning your system, your controllers are ready to use with Pro Tools.

Using Multiple Units

Multiple Artist Series Units

Artist Series controllers can be combined to form larger, unified systems. For example, you can use two Artist Mix units and an Artist Control simultaneously. Pro Tools will recognize all attached units automatically.

 *Use your EuControl software to arrange the layout of multiple units. For more information, see [EUCON Application Setup.pdf](#).*

Other Units

When EUCON is enabled in Pro Tools, the use of additional control surfaces is subject to the following conditions:

- ◆ You can use the Surround Panner Option, as well as one USB/MIDI-based control surface at the same time as EUCON. A MIDI control surface mirrors the first eight channels on your EUCON devices.
- ◆ You cannot use another Ethernet-based control surface (such as an ICON worksurface or C|24 control surface) at the same time as EUCON.

Confirm Installation

To confirm installation and communication:

- 1 Make sure you have enabled EUCON as explained in “Enabling EUCON in Pro Tools” on page 5.
- 2 Open a session if one is not already open.
- 3 Verify the Mix window displays a blue-green border around Pro Tools tracks that are currently banked to your controller.
- 4 Verify that the displays on your controllers show track names, location, or other session data, depending on the unit. For example, Artist Transport shows the Main Counter (such as min:sec, Bars|Beats, or other).



Color outlines in the Mix window showing currently banked tracks



See the Pro Tools Installation Guide for system optimization recommendations.

chapter 3

Track and Session Basics

This chapter provides examples of the following:

EuControl Basics How to use EuControl software to view and customize mappings and hardware settings (see “EuControl Basics” on page 10).

Using the Transport How to use the Transport controls to play, stop, cue, record arm, and more (see “Using the Transport” on page 14).

Banking the Faders How to use Bank and Nudge to be able to view tracks on the fader strips (see “Banking Faders” on page 16).

Fader Controls How to adjust track volume and pan, solo and mute tracks (see “Fader Strip Controls” on page 17).

Track Basics How to select tracks, assign input and output routing, Show/Hide tracks, and use Groups (see “Track Basics” on page 19).

EuControl Basics

EuControl software lets you see which controllers are communicating, configure their layout (fader order), and customize Soft Keys and other controls. This section provides a few basic instructions to cover common configuration questions. For complete information on using EuControl software, see the *EUCON Application Setup* guide.

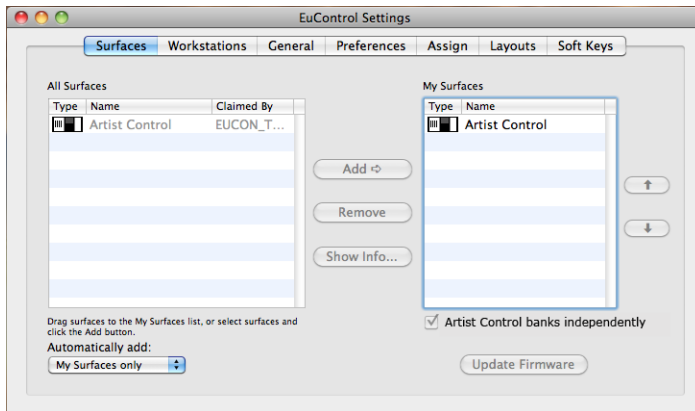
To jump directly to Pro Tools operation, see “Using the Transport” on page 14.

Viewing EuControl Settings On-Screen

To view assignments on-screen:

- 1 Make sure EuControl is running, then launch Pro Tools.
- 2 Open the EuControl Settings window by doing the following:
 - On Mac, click the EuControl icon at the upper right of your screen and choose EuControl Settings.
 - On Windows, click the EuControl icon in the System tray (or select EuControl Settings from the Start menu).

The EuControl Settings window appears on-screen.



EuControl Settings window

Viewing EuControl Settings on Artist Transport

On Artist Transport, you can use the **SHOW** key to view assignments on the unit display.

To view assignments on the controller display:

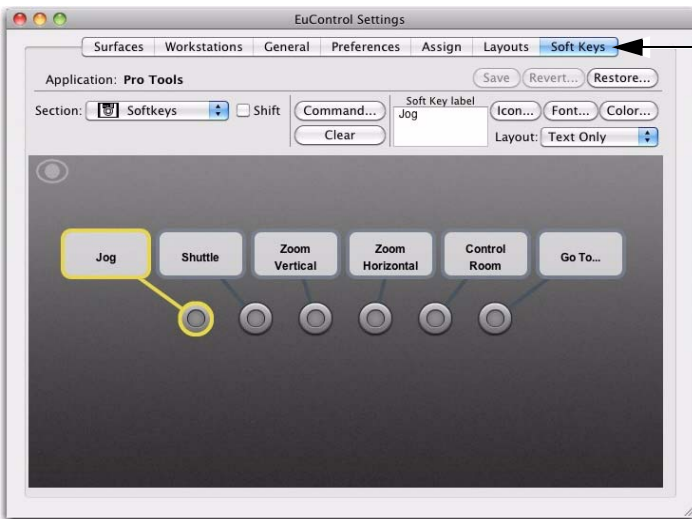
- 1 Press the **SHOW** key.
- 2 Press any Soft Key, Transport, or numeric key on Artist Transport and its assignment is shown in the display.

Customizing Controls in EuControl

EuControl software makes it very simple to remap any control to Pro Tools commands and options. Here is a quick example of how to reconfigure one of the Transport keys on Artist Transport to toggle Dynamic Transport mode on or off. It shows the steps required to re-assign a single key.

To re-assign a Soft Key on Artist Transport for Pro Tools:

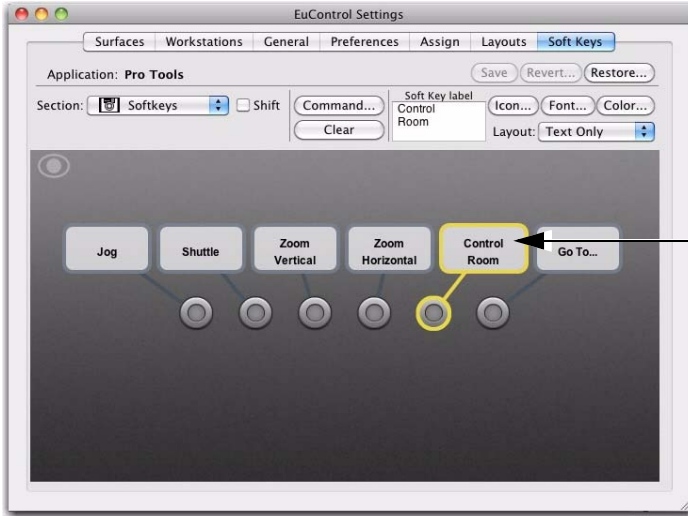
- 1 Launch Pro Tools.
- 2 Press the **SHOW** key. The EuControl Settings window opens.
- 3 Click to go to the Soft Keys tab. The currently assigned Soft Keys are shown.



Soft Keys tab in EuControl Settings (Artist Transport shown)

💡 If the EuControl Settings window doesn't look the same as the picture above, check the current setting of the Section menu located in the upper left of the EuControl Settings window. If necessary, click it and choose Softkeys.

4 Select the key you want to customize by clicking it on-screen, or pressing it on the controller. For example, select Soft Key 5 Control Room.



A Soft Key selected in the EuControl Settings window

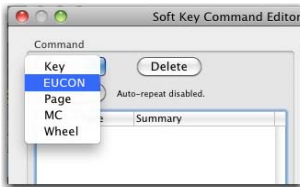
5 Click the Clear button near the center of the window. The Soft Key label box clears, showing no current assignment. This clears any previous assignments, making it easier to re-assign the control.

6 Click the Command button. The Soft Key Command Editor window opens.



You can double-click a Soft Key to go immediately to the Command Editor.

7 Click the Add button in the Command menu and choose EUCON.

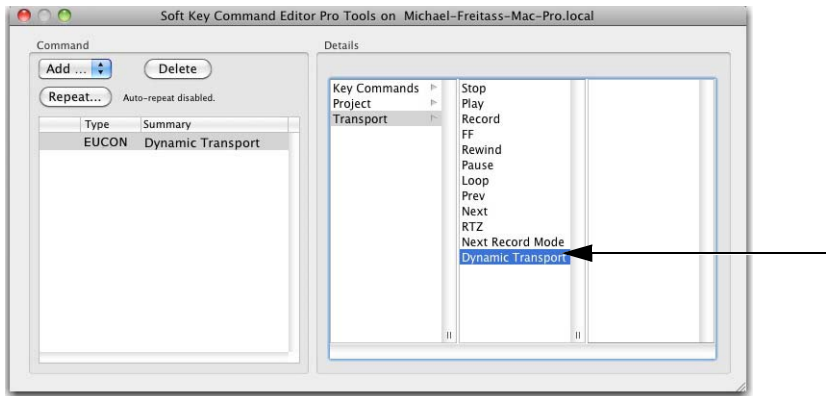


Adding a EuCon command in the Soft Key Command Editor

With a Command added to (or selected in) the Command List, choices appear in the Details area. In our example, the Details area lists Key Commands, Project, and Transport.

8 Click Transport in the Details area. Choices for Transport appear in the next Details list.

9 Click to select Dynamic Transport. The Command List updates to show the new assignment.



A Transport function assigned in the Soft Key Command Editor

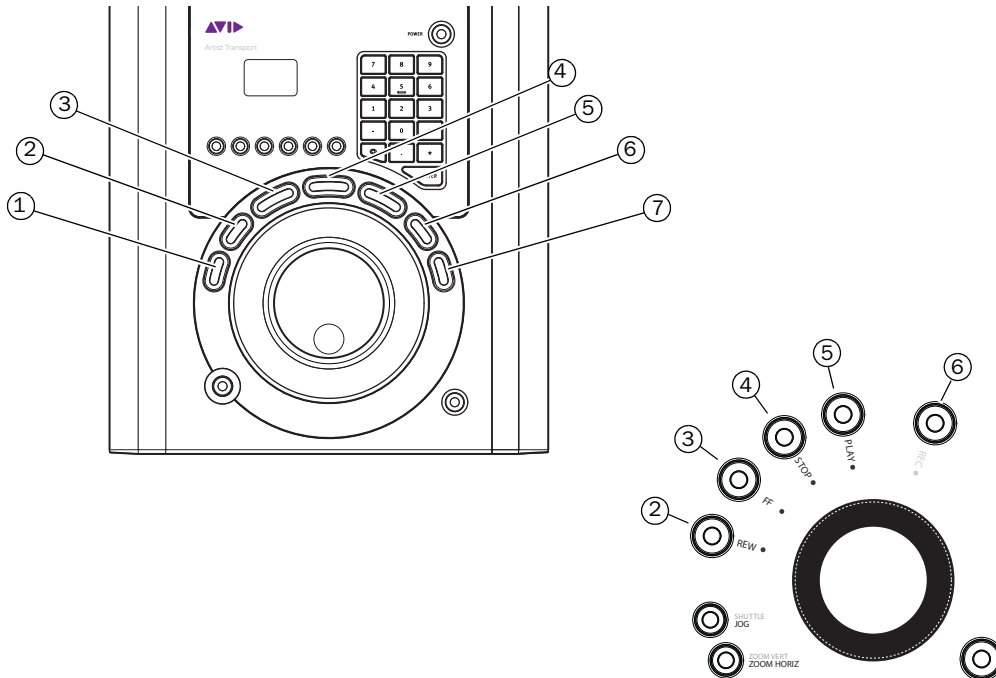
10 Close the Soft Key Command Editor and return to the EuControl Settings window. Soft Key 5 now shows Dynamic Transport for its assignment.

11 Repeat for any other controls on any other units in your system.

Using the Transport

Transport controls are available on many Artist Series controllers, and provide standard Pro Tools functions such as Play, Stop, Rewind, Fast-Forward, Record, and others as available on each unit.

The following figure identifies the default controls on Artist Transport and Artist Control.



Transport controls on Artist Transport (upper left) and Artist Control (lower right)

1 RTZ (Return to Zero) Returns the play cursor to the beginning of the session.

2 Rewind Moves the play cursor earlier.

3 Fast Forward Moves the play cursor later.

4 Stop Stops playback.

5 Play Starts playback.

6 Record Toggles the Pro Tools Transport (master) record state on (armed) or off.

7 Loop Toggles Loop Playback on and off.

Using the Transport Controls

Playback

To play from the current location:

- Press **Play**.

To stop playback:

- Press **Stop**.

Transport Controls and Modifier Keys

You can use modifier keys on your computer keyboard in combination with EUCON hardware Transport controls for additional playback modes (such as to enable Loop Playback).

To toggle Loop Playback on/off:

- Press Control + **Play** (Mac), or Ctrl + **Play** (Windows).

To toggle Pro Tools online or offline:

- Press Option + **Play** (Mac), or Alt + **Play** (Windows).

Session Time Navigation

To jump to the beginning of the session:

- Press **RTZ** (return to zero).

To rewind or fast-forward:

- Press **Rew** or **FFW**.



Pro Tools provides preference settings to optimize rewind and fast forward (such as Audio During Fast Forward/Rewind, and Back/Forward Amount). For more information, see the Pro Tools Reference Guide.

Recording

To record arm the Pro Tools Transport:

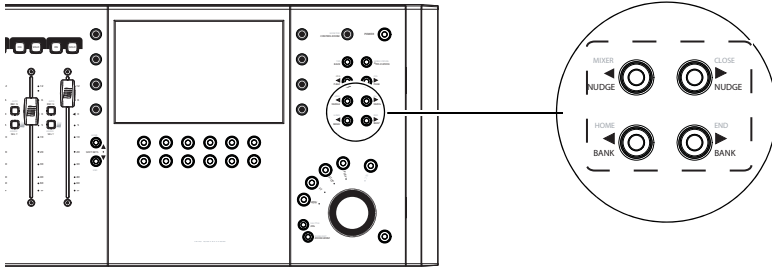
- Press **Record**.



For additional recording features, see Chapter 4, “Recording.”

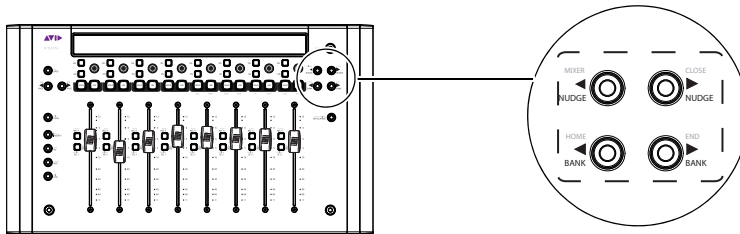
Banking Faders

To navigate to and display other tracks across the faders, use the Bank and Nudge keys. On Artist Control, these keys are in the Navigation section above the Transport controls.



Bank and Nudge controls on Artist Control

On Artist Mix, Bank and Nudge are to the right of the encoder row.



Bank and Nudge controls on Artist Mix

To bank the faders to other tracks:

- 1 Press **BANK >**. On Artist Control, this brings the next four tracks to the faders; on Artist Mix, the next eight. In Pro Tools, “next” means to the right in the Mix window, and below in the Edit window.
- 2 Press **< BANK** to move to previous tracks (to the left in the Mix window, and above in the Edit window).
- 3 Press **NUDGE >** to move one track at a time. For example, if tracks 1–8 were previously assigned to the faders on Artist Mix, pressing **Nudge >** will bring tracks 2–9 to the faders.
- 4 Press **< NUDGE** to move back one track at a time.

If you nudge or bank beyond the first and last tracks, the display above unused track will be blank.


HOME and Track Banking

To reset faders to the default bank on Artist Control or Artist Mix:

- Press and hold the **SHIFT** key, and press **< BANK (Home)**.

Fader Strip Controls

Fader strips on Artist Control and Artist Mix let you adjust track volume, pan, solo, and mute.

 *Flip mode lets you control pan, plug-ins and sends from the fader strips. See “Flipping Encoder Parameters to Faders” on page 18.*

Adjusting Track Volume and Pan

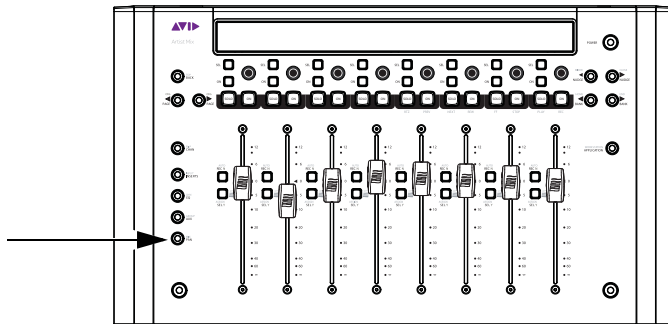
This section shows how to adjust track volume and pan with Artist Control or Artist Mix. On Artist Control, pan channel parameters are available through the Soft Encoders and Touchscreen. On Artist Mix, each channel strip provides one dual-function (rotate/push) encoder and two keys in the encoder row (**ON** and **SEL**).

To adjust track volume:

- Adjust the fader for that track.


To adjust track pan:

- 1 If unlit, press the **PAN** key so that it stays lit.

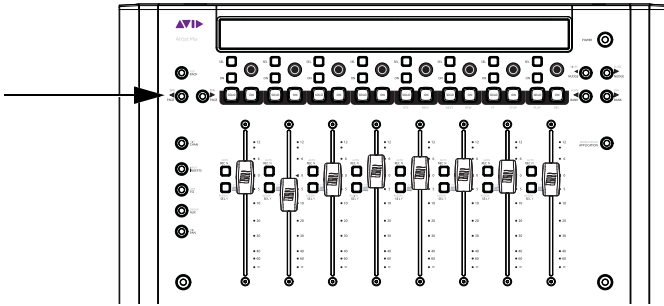


- 2 Rotate the encoder below the name of the track you want to pan. Stereo tracks default to Left pan.

- 3 To adjust right side pan on stereo tracks, press the lit **PAGE >** key and rotate the encoder for the desired track. The display shows R Pan above stereo tracks and the **< PAGE** key lights.

 *Artist Control provides two dedicated Soft Encoders for left and right pan.*

4 To return to left side pan, press the lit **< PAGE** key.



To reset pan to 0 (center):

- 1 If unlit, press the **PAN** key so that it stays lit.
- 2 Press the encoder below the name of the track you want to reset to center.



The standard Pro Tools modifier for parameter reset by holding Option (Mac) or Alt (Windows) can also be used to reset controls. For example, holding Option (Mac) or Alt (Windows) and touching a fader resets the fader to 0/unity.

Multichannel Panning

When mixing in surround, encoders control pan parameters such as divergence, center percentage, and others. For more information, see “Multichannel Panning for Surround” on page 47.

Flipping Encoder Parameters to Faders

Artist Mix lets you “flip” pan, plug-in, and send parameters to control them from the faders. Flipping plug-ins to the faders lets you control eight parameters (or more) simultaneously. The following example shows how to flip plug-in parameters to faders. Flip also works with pan and sends.

To flip plug-in controls to faders using Artist Mix:

- 1 Select a track that already has a plug-in inserted.
- 2 Press the **INSERT** key.
- 3 Push the encoder for the desired plug-in.
- 4 On Artist Mix, press the **FLIP** key (hold the **SHIFT** key and press **CHAN/FLIP**). Plug-in parameters are now at the faders.
- 5 Press the **PAGE >** key (if lit) to go to additional parameters. Press **< PAGE** to return to previous pages.
- 6 Press **FLIP** again to flip back to encoders.
- 7 Press the **BACK** key to close the plug-in.

Track Basics

This section shows how to select, route, show/hide, and group tracks.

Selecting Tracks

You can select tracks using the fader strip **SEL** keys on Artist Mix and Artist Control.

To select a track on Artist Mix or Artist Control:

- Press any fader **SEL** key.

The track is selected in Pro Tools. You can use standard Pro Tools shortcuts in combination with the fader **SEL** keys to do the following.

To select all tracks:

- Hold Option (Mac) or Alt (Windows) on your computer keyboard and press any unlit track **SEL** key.

To deselect a track:

- Hold Command (Mac) or Start (Windows) on your computer keyboard and press a lit track **SEL** key.

To deselect all selected tracks:

- Hold Option key (Mac) or Alt (Windows) on your computer keyboard and press any lit track **SEL** key.

To select a range of tracks:

- 1 Press the **SEL** key on the first track (usually, the left-most track you want to include in the selection).
- 2 Hold the Shift key on your computer keyboard and press the **SEL** key on the last (right-most) track. All tracks between the two are selected.

To select non-adjacent tracks (add to a selection):

- 1 Press the **SEL** key to select any track.
- 2 Hold Command (Mac) or Start (Windows) on your computer keyboard and press an unlit track **SEL** key.



Default Soft Key assignments include the QWERTY key modifiers Shift, Control, Option, and Command (Mac) or Shift, Control, Alt, and Start (Windows) for convenient access on units that do not include a QWERTY keyboard.

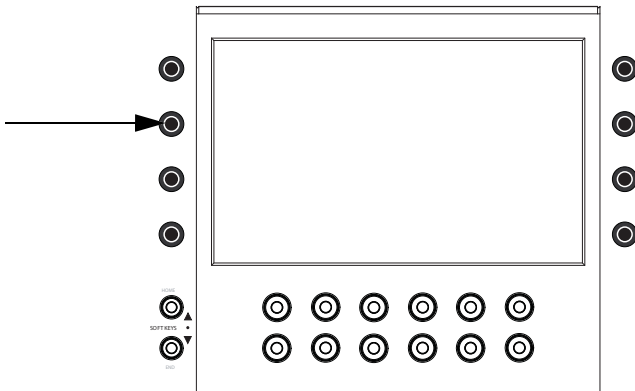
Track Input and Output Routing

Routing Track Input and Output on Artist Control

These examples show how to assign track input and output from the Soft Keys and Touchscreen sections on Artist Control.

To assign track input on Artist Control:

- 1 Select a channel by pressing its **SEL** key.
- 2 In the Soft Encoders, press the **Input** Soft Encoder. The Touchscreen shows the input assignment for the currently selected track.



Soft Encoder for Input

3 Press Soft Encoder 1 (the one showing the current input assignment, if any). The first three Soft Encoders now display **no input**, **interface**, and **bus**.

4 Press Soft Encoder 1, 2, or 3 to select the following as desired:

no input (encoder 1) Assign no input source to the track.

hardware (encoder 2) Displays available hardware input choices on the Soft Encoders.

bus (encoder 3) Displays available internal bus choices on the Soft Encoders.

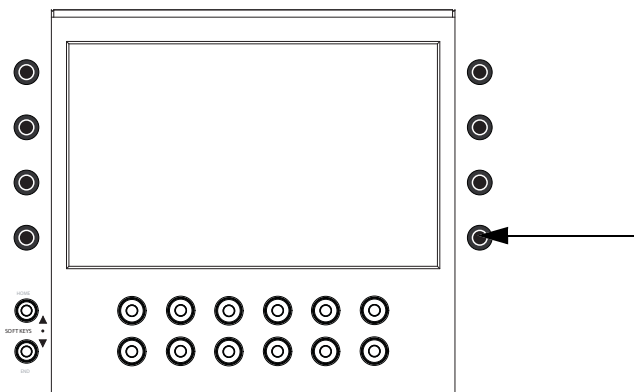
Artist Control shows up to eight available hardware or bus choices at a time (one in each Soft Encoder). You can navigate to additional hardware or bus choices by pressing **< PAGE** or **PAGE >**.

5 When the desired input source is displayed, press its Soft Encoder.

6 To exit Input Assign mode, press **BACK** (each press returns you up one level), or press **SHIFT + BACK/TOP** to exit and return to the top Soft Keys level.

To assign track output on Artist Control:

- 1 Select a channel by pressing its **SEL** key.
- 2 In the Soft Encoders, press the **Mix** encoder. The Touchscreen shows the output assignment for the currently selected track.



Soft Encoder for Mix

- 3 Press Soft Encoder 1 (the one showing the current assignment, if any). The first three Soft Encoders now display the next level of choices for output assignment.
- 4 Press Soft Encoder 1, 2, or 3 to select the following as desired:
 - no output (encoder 1)** Assigns no output to the track (the track will be silent).
 - hardware (encoder 2)** Displays Output bus choices (such as Out 1–2) in the Soft Encoders.
 - bus (encoder 3)** Displays internal bus choices in the Soft Encoders.
- 5 To see additional choices, press the lit **< PAGE** or **PAGE >** key.
- 6 When the desired output choice is displayed, press its Soft Encoder. A green LED lights next to the Soft Encoder, indicating assignment on the currently selected track(s).
- 7 To exit Output Assign mode, press **BACK** (each press returns you up one level), or press **SHIFT + BACK/TOP** to jump back to the top view.

Multiple Output Path Assignments

Pro Tools tracks can have multiple output paths assigned to them. When assigning track output from a EUCON unit, you can simply repeat the previous instructions and the new assignment will be *added* to the current assignments. When reassigning outputs, you must first assign no output, then assign the new output path.

To reassign track output without adding additional output assignments on Artist Control:

- 1 Select a channel by pressing its **SEL** key.
- 2 In the Soft Encoders, press the **Mix** encoder. The Touchscreen shows the output assignment for the currently selected track.
- 3 Press Soft Encoder 1 (the one showing the current assignment, if any). The first three Soft Encoders now display the next level of choices for output assignment.
- 4 Press Soft Encoder 1 to select no output.
- 5 Press **BACK** (each press returns you up one level), or press **SHIFT + BACK/TOP** to jump back to the top view.
- 6 Repeat these steps and choose a new output path.

Routing Track Input and Output on Artist Mix

These examples show how to route track input and output from Artist Mix.

To assign track input on Artist Mix:

- 1 Select a channel by pressing its **SEL** key.
- 2 Press **SHIFT+** the **INSERTS/INPUT** key. The display shows input assignments for banked tracks.
- 3 Press the Encoder for the track you want to assign. The first three Soft Encoders show the next choices for input assignment.
- 4 Press the Soft Encoder below the desired input choice:

Display	no input	interface	bus
Soft Encoder	1	2	3

- If you select no input, that encoder **ON** key lights.
 - If you select interface or bus, available hardware inputs or internal busses are listed above the Soft Encoders. Press the **< PAGE** and/or **PAGE >** keys to navigate to other input choices.
- 5 When the desired input source is displayed, press its Soft Encoder. The encoder **ON** key lights.
 - 6 To exit output assign mode, press **PAN**.

To assign track output on Artist Mix:

- 1 Select a channel by pressing its **SEL** key.
- 2 Press **SHIFT+** the **PAN/MIX** key. The display shows the output assignment for each banked track.
- 3 Press the encoder for the track you want to assign.
- 4 Press the encoder below the desired output assignment as follows:

Display	no output	output	bus
Soft Encoder	1	2	3

- If you select no output, the assignment is made and that encoder **ON** key lights.
 - If you select output or bus, Output bus and internal bus choices are listed above each Soft Encoder. Press the **< PAGE** and/or **PAGE >** keys to navigate to other output choices.
- 5 When the desired output is displayed, press its Soft Encoder. That encoder **ON** key lights.
 - 6 To exit output assign mode, press any other Knob Set selector (such as **PAN**).

Multiple Output Path Assignments

Pro Tools tracks can have multiple output paths assigned to them. When assigning track output from a EUCON unit, you can simply repeat the previous instructions and the new assignment will be *added* to the current assignments. When reassigning outputs, you must first assign no output, then assign the new output path.

To reassign track output on Artist Mix:

- 1 Select a channel by pressing its **SEL** key.
- 2 Press **SHIFT+** the **PAN/MIX** key. The display shows the output assignment for each banked track.
- 3 Press the encoder for the track you want to assign.
- 4 Press the encoder for no output (encoder 1). The assignment is made and that encoder **ON** key lights.
- 5 To exit output assign mode, press any other Knob Set selector (such as **PAN**).
- 6 Repeat these steps and assign the new output path.

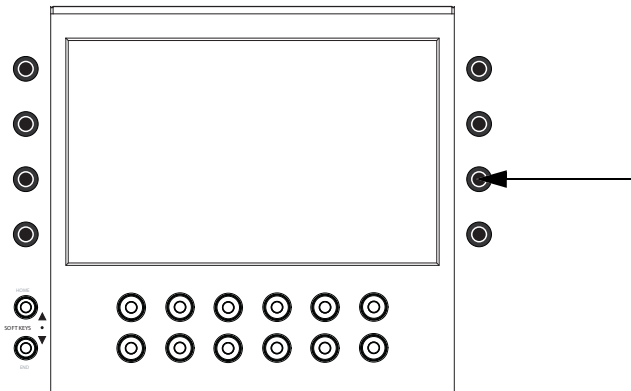
Working with Track Groups

This section shows how you can work with Pro Tools track Groups using an Artist Control or Artist Mix.

Working with Track Groups on Artist Control

To enable or suspend a Group:

1 Press the **GROUP** encoder to enter Group mode. Group names fill as many Soft Encoders as necessary. Green LEDs in the Touchscreen encoders indicate group membership for the currently selected track.



Soft Encoder for Group

2 Hold **SHIFT** and press the Touchscreen encoder for a group to toggle it between enabled and suspended.

To add or remove tracks from a Group:

1 Select a channel by pressing its **SEL** key.

2 Press the **GROUP** encoder to enter Group mode. Existing Group names are listed in the Soft Encoders, starting with the <All> Group in encoder 1. Green LEDs next to Soft Encoders indicate which Group(s) the currently selected track is a member of.

3 Press the Soft Encoder for the Group to add the current track to it (the green LED is lit), or remove the track from the group (no green LED).



Artist Control also provides a Soft Key for New Groups; simply select tracks, then press the New Group Soft Key to display the Create Group dialog on-screen. You can remap this and other Groups features to any Soft Key using the EuControl software included with your units. For more information, see the [EUCON Application Setup.pdf](#).

Working with Track Groups on Artist Mix

To enable or suspend a track Group using Artist Mix:

- 1 Press **SHIFT+AUX/GROUP**. The display shows <All> in every fader display (or, the letter designation of the last edited group).
- 2 Press the lit **PAGE >** keys to show other available Groups across the display. As you navigate to other Groups, the encoder **SEL** keys (in the encoder row) light to indicate an active (enabled) Group. In addition, track **ON** keys light to indicate track membership in the currently displayed Group.
- 3 To enable a Group, press any unlit (encoder) **SEL** key so that it stays lit.
- 4 To suspend a Group, press any lit (encoder) **SEL** key.

To add or remove tracks from a Group using Artist Mix:

- 1 Press **SHIFT+AUX/GROUP**. The display shows <All> above each encoder (or the letter designation of the last edited group). All tracks are members of the <All> group by default.
- 2 Press the lit **PAGE >** keys to show other available Groups across the display. As you navigate to other Groups, track **ON** keys light to indicate track membership in the currently displayed Group.
- 3 To add a track to the currently displayed Group, press the encoder in the desired track (below the displayed Group name). The track **ON** key lights green showing that track is now a member of the Group.
- 4 To remove a track from a Group, press the encoder again so that the **ON** key in that track is unlit.

chapter 4

Recording

This chapter explains default assignments for common Pro Tools recording tasks.

Select and Record Enable Tracks

This section provides standard track and deck record enable commands that work with units such as the Artist Control and Artist Mix.

To record enable a track:

- Press the track **REC** key.

To record enable additional tracks:

- Hold the Shift key on your computer keyboard and press additional track **REC** keys.



You can set Pro Tools Preferences for latching record enable, so you don't have to hold the Shift key to record enable additional tracks. For more information, see the Pro Tools Reference Guide.

To record enable all tracks:

- Hold Option (Mac) or Alt (Windows) on your computer keyboard, then press a track **REC** key.

To record enable all selected tracks:

- 1 Select two or more tracks (see “Track Basics” on page 19).
- 2 On your computer keyboard, hold Option+Shift (Mac) or Alt+Shift (Windows), then press the track **REC** key on one of the selected tracks.

To arm the Pro Tools Transport:

- Press the **Record** key in the Transport section.

Loop Record, Quick Punch, and Other Record Modes

Some supported controllers provide dedicated keys for enabling special Pro Tools recording modes. On other units, commands are available in EuControl software to let you cycle through available modes. (Some modes are available on all Pro Tools systems; other modes require Pro Tools HD.)

To enable alternate Record modes:

- 1 Hold Control (Mac) or Ctrl (Windows) on your computer keyboard and press the **REC** key (for example, on Artist Control, press the **REC** key in the Transport section). On-screen, the Pro Tools Transport master Record switch shows the current mode (P indicates QuickPunch, a Loop arrow appears when in Loop Record mode, and so on).
- 2 Press Control+**REC** (Mac) or Ctrl+**REC** (Windows) again to cycle to the next available recording mode.

Additional Recording Features

Artist Control and other units with a Touchscreen give you direct access to many additional controls related to recording workflows. From the Home screen (press the **Home** Soft Key, at the bottom left of the screen/keys), press the **Transport** key to be able to use factory Soft Keys for settings such as pre/post roll.

Artist Transport provides six Soft Keys that can be assigned to recording-related functions. In combination with the **SHIFT** key, there are a total of 12 available Soft Key assignments. (For an example, see “Customizing Controls in EuControl” on page 11.)

chapter 5

Editing

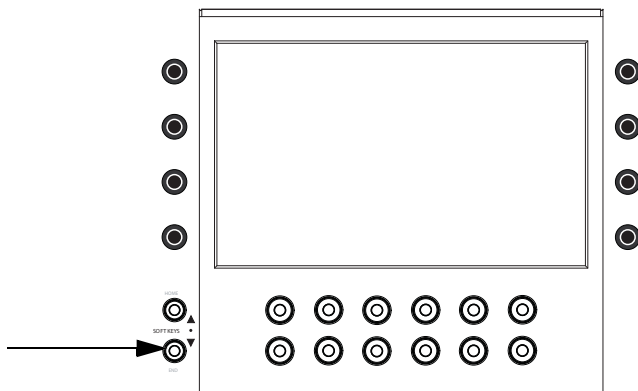
EUCON supports many Pro Tools editing features, including tool and mode selection, zooming, and Jog/Shuttle. Soft Keys provide many additional commands on units with Soft Keys or a Touchscreen.

Selecting Edit Tools and Edit Modes

This section shows how you can use the Soft Keys on Artist Control and other units for one-button access to Edit Tools and modes.

To change Edit Tools using an Artist Control:

- 1 Press **SHIFT+SOFTKEYS/HOME** to return the Soft Keys to their first (home) page.
- 2 Press the **SOFT KEYS V (down)** key once to navigate the Soft Keys to the second page.



Soft Keys V (down)

The Soft Keys display shows Edit Tools and Edit Modes.

- 3 Press the Soft Key for the desired Edit Tool (such as the **Smart Tool**, **Trim**, or **Grab**).

4 Press an Edit Tool Soft Key again to select the next option for that tool (for example, pressing **Trim** repeatedly cycles through all available Trim tool options).



If repeated pressing does not cycle through tool options, deselect Options > Edit/Tool Mode Keyboard Lock in Pro Tools. For more information, see the Pro Tools Reference Guide.

To change Edit Modes using an Artist Control:

- 1 Press **SHIFT+SOFTKEYS/HOME** to return the Soft Keys to their first (home) page.
- 2 Press the **SOFT KEYS v** (down) key once to navigate the Soft Keys to the second page. The Soft Keys display now shows Edit Modes in the lower row.
- 3 Press the Soft Key for the desired Edit Mode (Shuffle, Slip, Spot, or Grid).

To toggle between Absolute and Relative Grid mode:

- Press the **Grid** Soft Key again. In Pro Tools, the Edit Mode display shows Rel Grid when that mode is enabled.

Using the Jog/Shuttle Wheel

The Jog wheel and Shuttle ring on many controllers (such as Artist Transport) perform a variety of functions, from basic Jog and Shuttle to zooming, adjusting track height, and moving selections.

To use the Jog wheel to jog and shuttle:

- 1 Enable Jog mode by pressing the **JOG** key (if available) or the Soft Key assigned to Jog.
- 2 Rotate the Jog wheel to jog back or forward.
- 3 To enable Shuttle mode, press the **SHUTTLE** key or the equivalent Soft Key, if available.

To zoom horizontally:

- 1 Press the **ZOOM HORIZONTAL** key, or assign a key to Zoom Horizontal using EuControl software.
- 2 Spin the Jog wheel to the left to zoom out horizontally (show more session time), or to the right to zoom in.

To adjust track height:

- 1 Press the **ZOOM VERTICAL** key (on Artist Control, press **SHIFT + ZOOM HORIZ**), or assign a key to it using EuControl software.
- 2 Spin the Jog wheel to the left to zoom out (reduce track height), or to the right to zoom in and increase track height.

Using Markers

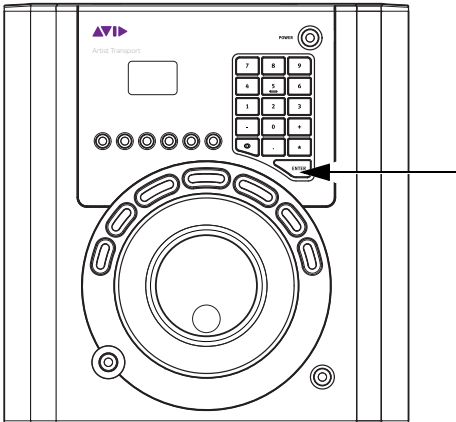
Pro Tools Markers and Memory Locations let you store and navigate to specific locations in your session (such as to mark the beginning of a verse, or the beginning of dialog), and/or selections in the timeline (such as an entire verse, or complete scene).

Any controller with a numeric keypad such as the Artist Transport can create and recall (go to) Memory Locations.

Using Markers on Artist Transport

To create a Marker in a Pro Tools session using Artist Transport:

- 1 Begin playback.
- 2 At the point where you want to store a marker, press the **Enter** key on the numeric keypad.



Enter key on the numeric keypad

To recall a Marker using Artist Transport:

- On the Artist Transport numeric keypad, press Decimal (.), the Memory Location number, and Decimal (.) again.

Using Markers on Artist Control

On Artist Control and other units with a Touchscreen, Soft Keys are available to create, recall, and manage Markers. See the Home page of Touchscreen Soft Keys and look for “Memory Location.”

Soft Keys for Editing

This section shows how to get to the default Touchscreen controls for editing with Artist Control. Steps on other units with a Touchscreen will be similar.

To use the Editing Soft Keys:

- 1 Make sure the Touchscreen is on Page 1 (press the **HOME** Touchscreen button if necessary).
- 2 In the Touchscreen, press the **EDITING** key (it has a small scissors icon). The Touchscreen and the Soft Keys change to show the default Editing assignments.

The Editing page provides a collection of commands and tasks specific to editing in Pro Tools. These commands can greatly speed up workflows by reducing the amount of mousing required for common actions including (but not limited to) changing the Nudge and Grid values, Region Groups, extending selections to previous or next, trimming, and more.

Track View for Editing

You can use modifier keys in combination with Artist Series controls to change track views in the Edit window. This lets you quickly show waveform data in a track.

To show waveforms for a track on Artist Mix or Artist Control:

- Hold Command+Control (Mac) or Start+Ctrl (Windows) and press the track **SEL** key.

This same technique also lets you show automation data in track views. For additional shortcuts to view automation data, see “Shortcuts to Display Automation Playlists” on page 44.

chapter 6

Plug-ins and Sends

This chapter explains how to assign and adjust plug-ins and sends on tracks.

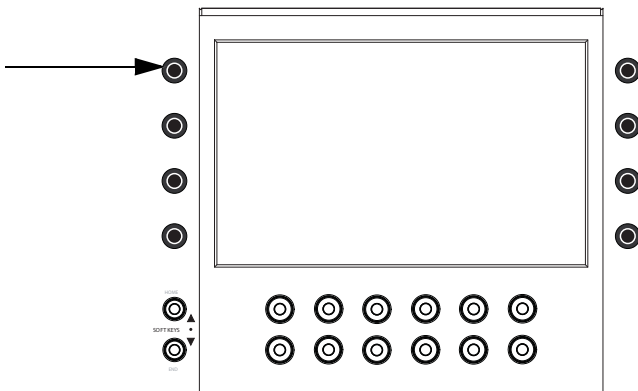
Working with Plug-in Inserts

This section shows you how to work with plug-ins using Artist Control or Artist Mix.

Working with Plug-ins on Artist Control

To access and edit a plug-in on Artist Control:

- 1 Bank to and select the desired track by pressing its **SEL** key.
- 2 Press the **INSERTS** encoder.



Soft Encoder for Inserts

If no plug-in is inserted in the current slot, the slot letter appears in lower-case (a, b, c, and so on). If any plug-ins are already assigned in the current slot, the name of the plug-in is shown. Plug-in names are abbreviated as necessary. For example, if the Compressor/Limiter 3 dynamics plug-in is present in the current slot, the display above its track shows CmprsLD.

- 3 To view other insert slots, press **PAGE >** until that slot and any assigned plug-ins are displayed.
- 4 Press the encoder for the plug-in you want to edit.

The first page of parameters for that plug-in are mapped across the encoders.

- 5 Press **PAGE >** (or **PAGE <**) to access other parameters for the current plug-in.

Assigning Plug-ins on Artist Control

To assign a plug-in on Artist Control:

- 1 Select a track.
- 2 Press the **Inserts** encoder.
- 3 Press both **PAGE** keys (**< PAGE** and **PAGE >**) to enter Insert Assign mode. Insert slots are displayed in the Touchscreen (a, b, c, and so on), and both **PAGE** keys flash.
- 4 Press the encoder next to the desired insert slot.
- 5 The Soft Encoders show the next level of choices: no insert, multichannel, multi-mono, or I/O (for hardware inserts, when available).
- 6 Press the encoder for the desired insert type. The Soft Encoders show the next level of choices such as EQ, Dynamics, Reverb, and so on. (Choices shown on your system will vary depending on which plug-ins you have installed, and the Pro Tools setting to organize plug-ins by Category or Manufacturer).
- 7 When the desired plug-in is displayed, press its encoder again to insert it on the selected track.

Making Plug-ins Inactive or Active on Artist Control

To toggle a plug-in between active and inactive:

- 1 Bank to and select the desired track.
- 2 Press the **INSERTS** encoder.
- 3 Navigate the Touchscreen until the desired insert slot and plug-in name is displayed.
- 4 Press both **SHIFT** keys simultaneously to enable Shift mode (both key LEDs stay lit).
- 5 Hold Command+Control (Mac) or Control+Start (Windows) and touch the insert name in the Touchscreen.



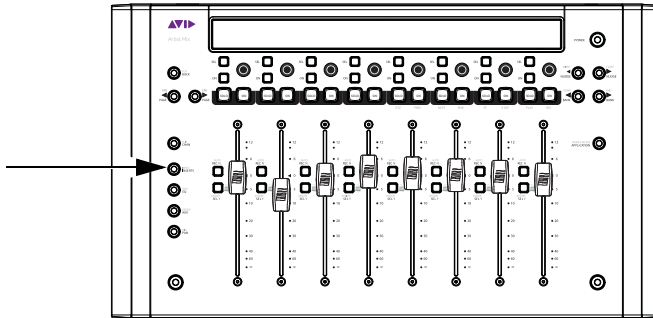
For information about plug-in automation, see Chapter 7, “Automation and Mixing.”

Working with Plug-ins on Artist Mix

This section shows how to use the switches on Artist Mix to access any plug-in inserted on a track.

To access and edit a plug-in on Artist Mix:

- 1 Bank to and select the desired track.
- 2 Press the **INSERTS** key.



Artist Mix INSERTS key

If no plug-in is inserted in the current slot, the slot letter appears in lower-case (a, b, c, and so on). Any plug-ins in the current slot are displayed in the track LCD display. Names are abbreviated as necessary. For example, if the Compressor/Limiter 3 dynamics plug-in is present in the current slot, the display above its track shows CmprsLD.

- 3 To view other insert slots, press **PAGE >** until that slot and any assigned plug-ins are displayed.
- 4 Press the encoder beneath the displayed name of the plug-in you want to edit. The first page of parameters for that plug-in are now mapped across the encoders.
- 5 Press **PAGE >** (or **PAGE <**) to access other parameters for the current plug-in.

Assigning Plug-ins on Artist Mix

To assign a plug-in on Artist Mix:

- 1 Select a track.
- 2 Press the **INSERTS** key. The display shows currently assigned plug-ins (or empty slot letter a–j) above the encoders.
- 3 Press both **PAGE** keys (**< PAGE** and **PAGE >**) simultaneously to enter Insert Assign mode. Insert slots for the selected track are shown across the display. For example, on a single Artist Mix (eight faders), slots a–h are shown; to access additional slots (i and j) press the lit **PAGE >** key.

4 Press the encoder below the slot in which you want to insert a plug-in (such as slot a). The display above the first three encoders now shows the following insert choices:

Display	no insert	multichannel	multi-mono	I/O (not available on all systems)
Soft Encoder	1	2	3	r

5 Do one of the following:

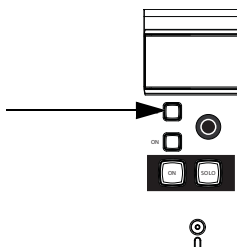
- Press the encoder below no insert to leave that slot unassigned.
- Press multi-channel or multi-mono to see a list of plug-in Categories (such as EQ, Dynamics, and other) or Manufacturers. Keep pressing encoders to select the desired Category or Manufacturer (plug-in names are shown across the display) and finally the desired plug-in.
- Press I/O to see available hardware inserts (not available on all systems). Press an encoder to assign that hardware insert.

6 When the desired plug-in is displayed, press its encoder again to insert it on the selected track.


Making Plug-ins Inactive or Active on Artist Mix

To toggle a plug-in between active and inactive:

- 1 Bank to and select the desired track by pressing its **SEL** key.
- 2 Press the **INSERTS** encoder.
- 3 Use the **< PAGE** and **PAGE >** keys to navigate the display until the desired insert slot and plug-in name is shown.
- 4 Hold Command+Control (Mac) or Control+Start (Windows) and press the encoder row **SEL** key for the desired plug-in.



Encoder SEL key on Artist Mix

 For information about automating plug-ins, see Chapter 7, “Automation and Mixing.”

Using the EQ and DYN Keys

You can use the **EQ** and **DYN** keys on the Artist Mix or Artist Control to quickly access inserted EQ or dynamics plug-ins.

To access an EQ or dynamics plug-in directly:

- 1 Bank to display a track with an EQ (or dynamics) plug-in inserted.
- 2 Press the **EQ** (or **DYN**) key. The display shows the names of any inserted EQ or dynamics plug-ins, regardless of their slot location (a–f).
- 3 Press the encoder below the EQ or dynamics plug-in you want to edit.

EQ/DYN Keys and Standard Plug-in Mapping

When you navigate to an EQ or Dynamics plug-in using the **INSERTS** key, the parameters are arranged across your hardware controls in a layout unique to that plug-in, and/or its manufacturer.

The **EQ** and **DYN** keys, by contrast, map plug-in parameters according to a standard control layout. This lets the controls appear in the same arrangement across your controller, regardless of the model or manufacturer.

Working with Sends

This section shows how you can assign and adjust Pro Tools sends.



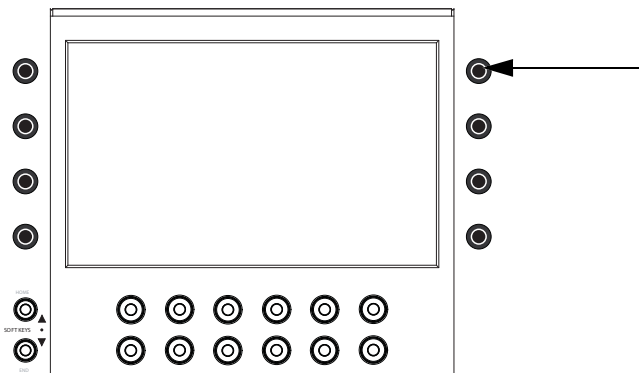
Artist Series hardware and documentation use the term “AUX” for the Pro Tools term “sends.” Do not confuse references to “AUX” with Pro Tools Auxiliary Input tracks.

Working with Sends on Artist Control

Assigning Sends

To assign sends on Artist Control:

- 1 Select one or more tracks.
- 2 Press the **SENDS** Soft Encoder. The first five Soft Encoders show slots a–e, including any sends already assigned in that slot.



Soft Encoder for Sends

- 3 If desired, press the lit **PAGE >** key to go to sends f–j.
- 4 Press both **PAGE** keys (< **PAGE** and **PAGE >**) simultaneously to enter Send Assign mode.
- 5 Press the encoder for the send slot (a–j) you want to assign. The first three Soft Encoders show the next choices for Send assignment.
- 6 Press a Soft Encoder to choose one of the following:
 - no send** Assigns no send bus to the selected track(s).
 - output** Displays available output busses in the Soft Encoders.
 - bus** Displays available internal busses in the Soft Encoders.
- 7 To see additional choices, press the lit < **PAGE** or **PAGE >** key.

8 When the desired output or bus is displayed, press the Soft Encoder for the desired choice. A green dot appears indicating that send bus is now assigned to the currently selected tracks.



To assign the send to all selected tracks, hold Option+Shift (Mac) or Alt+Shift (Windows) and press the encoder. To assign the send on all tracks, hold Option (Mac) or Alt (Windows).

Opening and Editing Sends on Artist Control

To access and edit a send on Artist Control:

- 1 Select a track with send already assigned.
- 2 Press the **SENDS** Soft Encoder. The Soft Encoders show assigned sends, and empty slots (a–e, or f–j).

Once in Aux mode, do any of the following to adjust send parameters:

To adjust send level:

- Rotate the encoder for the desired send.

To adjust send pan:

- 1 Press the encoder for the send you want to adjust.
- 2 Rotate the Soft Knob for **L Pan** and/or **R Pan**.

To mute a send:

- Touch its Soft Encoder in the Touchscreen display (such as Bus 1). Touch again to unmute.

To toggle the send pre- or post-fader:

- Hold **SHIFT** and touch the Soft Encoder for the send in the Touchscreen (such as Bus 1).

Making Sends Inactive or Active on Artist Control

To toggle a send between active and inactive:

- 1 Bank to and select the desired track.
- 2 Press the **SENDS** encoder.
- 3 Navigate the Touchscreen until the desired send is displayed.
- 4 Press both **SHIFT** keys simultaneously to enable Shift Lock mode (both key LEDs stay lit).

5 Hold Command+Control (Mac) or Control+Start (Windows) and touch the Send name in the Touchscreen.



To toggle all sends in that same slot (a–j) on all selected tracks, hold Option+Shift (Mac) or Alt+Shift (Windows) and touch the Send name. To toggle all sends in that slot on all tracks, hold Option (Mac) or Alt (Windows).

Working with Sends on Artist Mix

Assigning Sends on Artist Mix

To assign a send on Artist Mix:

- 1 Select a track.
- 2 Press the **AUX** key.
- 3 Press both **PAGE** keys (< **PAGE** and **PAGE** >) to enter Send Assign mode. The display shows the current (or last viewed) send slot a–j (an 8-fader system will only show slots a–f). To see additional send slots, press the lit **PAGE** > key.
- 4 Press the encoder below desired send slot. For example, to assign a send to the current track in slot a, press encoder 1. The display above the first three encoders shows the following choices:

Display	no send	output	bus
Soft Encoder	1	2	3

- 5 Do one of the following:
 - Press the encoder below no send to leave that slot unassigned.
 - Press output to see output bus choices (such as Out 1–2).
 - Press bus to see available internal busses.
- 6 To see additional choices (beyond the number of faders in your system) press the lit **PAGE** > key.
- 7 When the desired send is displayed, press its encoder to make the assignment. In that fader strip, the encoder **ON** key lights.

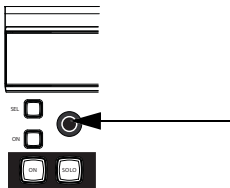


To assign a send in the same slot to all selected tracks, hold Option+Shift (Mac) or Alt+Shift (Windows) on your computer keyboard while pressing the desired encoder. To assign to all tracks, hold Option (Mac) or Alt (Windows).

Opening and Editing Sends on Artist Mix

To access and edit a send (Artist Mix):

- 1 Bank to and select the desired track.
- 2 Press the **AUX** key. Send assignments in slot A are displayed in the track LCD display.
- 3 To view other sends, press **PAGE >** until it is displayed (such as Bus 1–2).
- 4 To adjust send level, rotate the encoder directly below the desired send.



Send level encoder on Artist Mix

To mute the send:

- Press the **ON** key in the encoder row directly below the desired send. When muted, the **ON** key is unlit; when the send is on, the **ON** key is lit.

To toggle the send between pre- and post-fader:

- Press the **SEL** key in the encoder row directly below the desired send. Sends are post-fader by default, in which state the **SEL** key is unlit. When the send is pre-fader, the **SEL** key is lit.

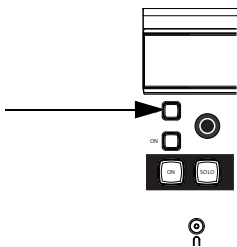
To adjust send pan:

- 1 Press the encoder showing the desired send. If the send is stereo, a single encoder will be mapped to send pan (usually encoder 8). If the send is three or more channels (such as LCR, or a 5.1 send), additional send pan parameters become available in the encoders (such as divergence, center percentage, and other multichannel pan parameters).
- 2 Rotate the appropriate encoder.


Making Sends Inactive or Active on Artist Mix

To toggle a send between active and inactive:

- 1 Bank to and select the desired track.
- 2 Press the **AUX** key.
- 3 Use the **< PAGE** and **PAGE >** keys to navigate the display until the desired send is shown.
- 4 Hold Command+Control (Mac) or Control+Start (Windows) and press the encoder row **SEL** key for the desired send.



Encoder SEL key on Artist Mix

 To toggle all sends in the same slot on all selected tracks, hold Option+Shift (Mac) or Alt+Shift (Windows) and touch the press the encoder **SEL** key. To toggle all sends in the same slot on all tracks, hold Option (Mac) or Alt (Windows) and press the encoder.

chapter 7

Automation and Mixing

This chapter shows how to control automation settings and how to pan in multichannel for surround.

Enabling and Suspending Automation

You can control many Pro Tools automation settings directly from the Touchscreen on Artist Control and other units.

To open the Automation window using Artist Control:

- In the Soft Keys Home page, press the **Auto** key. (By default, this key appears in the Soft Key Home page.) The Automation window opens on-screen, and the Touchscreen displays automation controls.

To enable or disable automation types:

- 1 Press the **Auto** Soft Key.
- 2 Press the Touchscreen button for the desired parameter. For example, to toggle Volume automation enabled/suspended, press the Soft Key **ENABLE VOLUME**.

Track Automation Mode Selection

To select the Automation mode for a track on Artist Control or Artist Mix:

- 1 Hold **SHIFT** while pressing the **REC/AUTO** key on a track.
- 2 Press **SHIFT+REC/AUTO** again to cycle to the next available automation mode such as Off, Read, Latch, or Touch. Not all modes will be available; for additional modes, use the mouse and the on-screen track Automation mode selector.

Punching Out of Automation Recording

To punch out of an automation pass:

- Press **SHIFT+REC/AUTO** on the desired track.

Shortcuts to Display Automation Playlists

The following shortcuts let you quickly display the breakpoint automation playlist for a control by clicking it in combination with modifier keys on your computer keyboard. These shortcuts work on Artist Control and Artist Mix.

Waveform View

To show the waveform for a track in the Edit window:

- Hold Command+Control (Mac) or Control+Start (Windows) and press the track **SEL** key.



To do to all selected tracks, hold Option+Shift+Control+Command (Mac) or Alt+Shift+Control+Start (Windows) and press SEL. To do to all tracks, hold Option+Control+Command (Mac) or Alt+Control+Start (Windows) and press SEL.

Automation Views

Track Volume

To show volume automation for a track in the Edit window:

- Hold Control+Command (Mac) or Control+Start (Windows) and touch the track fader.



To do to all selected tracks, hold Option+Shift+Control+Command (Mac) or Alt+Shift+Control+Start (Windows) and touch the fader. To do to all tracks, hold Option+Control+Command (Mac) or Alt+Control+Start (Windows) and touch the fader.

Track Pan

To show track pan automation in the Edit window:

- 1 Press the **PAN** key to have pan on the encoders.
- 2 Hold Control+Command (Mac) or Ctrl+Start (Windows) and touch the Pan encoder on a track.



To do to all selected tracks, hold Option+Shift+Control+Command (Mac) or Alt+Shift+Control+Start (Windows) and touch the Pan encoder on a selected track. To do to all tracks, hold Option+Control+Command (Mac) or Alt+Control+Start (Windows) and touch any Pan encoder.

Send Level

To show Send level automation in the Edit window:

- 1 Press the **AUX** key (Artist Mix) or the **SENDS** Soft Encoder (Artist Control) to bring sends to the encoders.
- 2 If necessary, press the **PAGE >** key until the desired Send slot is displayed.
- 3 Hold Control+Command (Mac) or Ctrl+Start (Windows) and touch the Send encoder in the desired track.



To do to all selected tracks, hold Option+Shift+Control+Command (Mac) or Alt+Shift+Control+Start (Windows) and touch the Send encoder on a selected track. To do to all tracks, hold Option+Control+Command (Mac) or Alt+Control+Start (Windows) and touch any Send encoder.

Send Pan

To show Send pan automation in the Edit window:

- 1 Press the **AUX** key (Artist Mix) or the **SENDS** soft Knob (Artist Control) to bring sends to the encoders.
- 2 If necessary, press the **PAGE >** key until the desired send slot is displayed.
- 3 Press the encoder for the desired send.
- 4 Hold Control+Command (Mac) or Ctrl+Start (Windows) and touch the Send pan encoder on a track.



To do to all selected tracks, hold Option+Shift+Control+Command (Mac) or Alt+Shift+Control+Start (Windows) and touch the Pan encoder on a selected track. To do to all tracks, hold Option+Control+Command (Mac) or Alt+Control+Start (Windows) and touch any Send pan encoder.

Plug-In Automation

Showing Plug-in Automation

To show automation for a continuous plug-in parameter:

- 1 Press the **INSERTS** key (Artist Mix) or the **INSERTS** Soft Knob (Artist Control).
- 2 Display the desired plug-in parameter using the encoders and **<PAGE>** keys. (See “Working with Plug-in Inserts” on page 33.)
- 3 Hold Control+Command (Mac) or Ctrl+Start (Windows) and touch the encoder for the desired plug-in parameter.

To show automation for a switch-type plug-in parameter on Artist Control:

- 1 Press the **INSERTS** Soft Knob.
- 2 Display the desired plug-in parameter using the encoders and **<PAGE>** keys. (See “Working with Plug-ins on Artist Control” on page 33.)
- 3 Hold Control+Command (Mac) or Ctrl+Start (Windows) and touch the plug-in parameter in the Touchscreen.

To show automation for a switch-type plug-in parameter on Artist Mix:

- 1 Press the **INSERTS** key.
- 2 Display the desired plug-in parameter using the encoders and **<PAGE>** keys. (See “Working with Plug-ins on Artist Control” on page 33.)
- 3 Hold Control+Command (Mac) or Ctrl+Start (Windows) and touch the encoder.

Enabling All Plug-in Parameters for Automation

To enable all plug-in controls for automation on Artist Control:

- 1 Press the **INSERTS** Soft Knob.
- 2 Hold Control+Command+Option (Mac) or Control+Start+Alt (Windows) and touch the desired plug-in in the Touchscreen.

To enable all plug-in controls for automation on Artist Mix:

- 1 Press the **INSERTS** key.
- 2 Hold Control+Command+Option (Mac) or Control+Start+Alt (Windows) and press the **ON** key (in the encoder row) for the desired plug-in.

Multichannel Panning for Surround

This section shows how you can use Artist Control or Artist Mix to pan in multichannel for surround sound.

Surround Panning on Artist Control

In surround sessions, the Touchscreen lets you use the Soft Encoders to pan tracks in surround.

To pan in surround using the Soft Encoders:

- 1 Press a track **SEL** key to select a track assigned to a multichannel output path (such as a 5.1 or 7.1 output path).
- 2 Press the **PAN** encoder. Multichannel pan parameters such as divergence, pan, and center percentage appear in the Soft Encoders.
- 3 Press the lit **PAGE >** key to show other available pan parameters.
- 4 Rotate an encoder to adjust the selected parameter.
- 5 To reset a parameter to its default setting, press the encoder for that parameter.

Surround Panning on Artist Mix

Artist Mix lets you use the encoders to control multichannel pan parameters.

To pan in surround:

- 1 Press a track **SEL** key to select a track assigned to a multichannel output path (such as a 5.1 or 7.1 output path).
- 2 Press the **PAN** key.
- 3 Press the **CHAN** key. Multichannel pan parameters such as Front Left/Right, Front/Rear, divergence, pan, and center percentage appear in the Soft Encoders.



*As an alternative to using the encoders, hold **SHIFT** and press the **CHAN/FLIP** key to flip pan controls to the faders. Press **FLIP** again to return to encoders.*

- 4 Press the lit **PAGE >** key to show other available pan parameters.
- 5 Rotate an encoder to adjust the selected parameter.
- 6 To reset a parameter to its default setting, press the encoder for that parameter.



For more information about multichannel tracks, busses, and output paths, see the Pro Tools Reference Guide.

index

A

- active/inactive
 - plug-ins 36
 - plug-ins Artist Control 34
 - sends 39
 - sends, Artist Mix 42
- Artist Control
 - and Soft Keys for editing 32
 - input and output routing 20
 - plug-ins 33
- Artist Mix
 - input and output routing 22
 - plug-ins 35
- Artist Transport 11
 - markers 31
- automation 43
 - plug-ins 46
 - shortcuts to show playlist 44
- Avid
 - customer success 4

B

- Bank/Nudge 16
- banking 16

C

- compatibility 1
- customize (remap with EuControl) 10

E

- Edit Modes 30
- Edit Tools 29
- encoders 17
- EUCON 1
- EuControl
 - customizing 10
- EuControl Settings window 10

F

- fader 17
- Fast Forward 14

G

- Grabber 29
- Grid 32
- Grid (rel and ab) 30
- groups 24

H

- home (bank) 16

I

- ICON 6
- input 20, 22

J

- Jog 30

L

- Loop Record 28

M

- make active/inactive
 - plug-ins (Artist Mix) 36
- Markers 31
- memory locations (see Markers)
- MIDI and EUCON 6

N

- Nudge 32

O

- output 20, 22

P

- pan 17
 - stereo tracks 17
- Pencil 29
- Play 14
- plug-ins
 - assigning 34, 35
 - make active/inactive (Artist Control) 34

Q

- QuickPunch 28

R

- Record (Transport) 14
- recording 27
 - modes 28
- Rewind 14
- RTZ3 14

S

- Scrubber 29
- SEL (Assign) 19
- selecting tracks 19
- Selector 29
- sends 41
 - assigning 38, 40
 - level, pan, mute, pre/post 39
- SHOW 11
- Shuffle 30
- Shuttle 30
- Slip 30
- Spot 30
- stereo pan 17
- Stop 14
- system requirements 1

T

- technical support 4
- track height 30
- tracks
 - banking 16
 - home 16
 - selecting 19
- Trimmer 29

V

- volume (fader) 17

Z

- zoom using the Jog wheel 30
- Zoomer 29



Avid
2001 Junipero Serra Boulevard
Daly City, CA 94014-3886 USA

Technical Support (USA)
Visit the Online Support Center at
www.avid.com/support

Product Information
For company and product information,
visit us on the web at www.avid.com